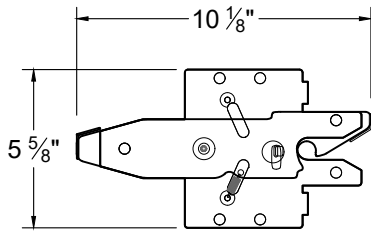
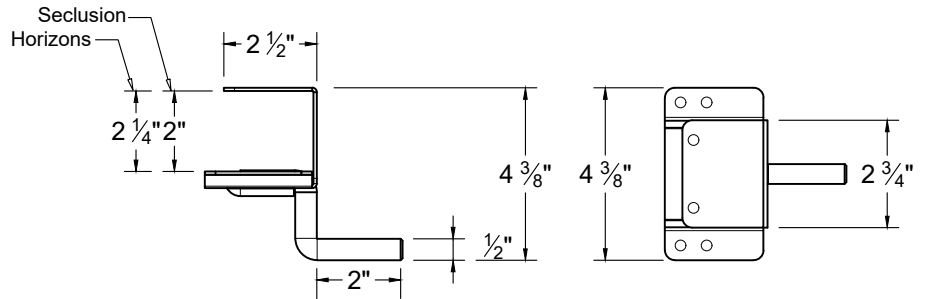


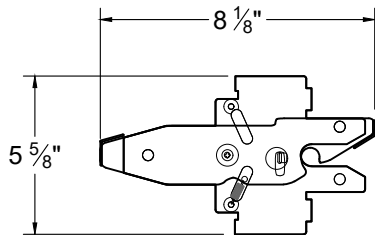
**SINGLE GATE LATCH**



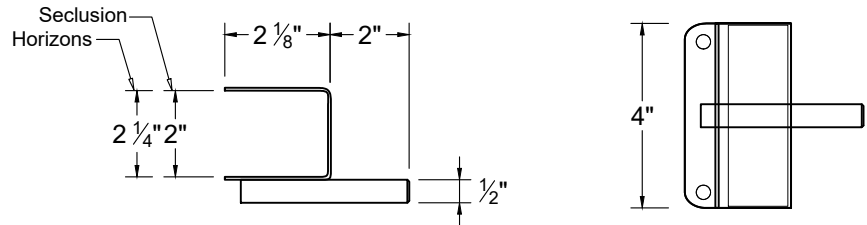
**SINGLE GATE STRIKER**



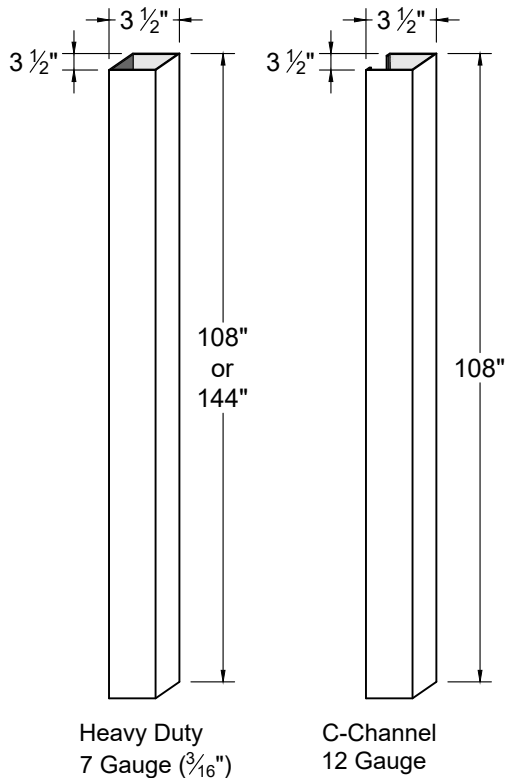
**DOUBLE GATE LATCH**



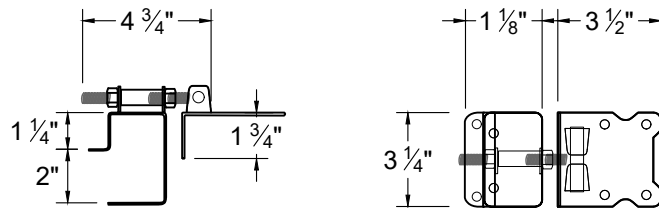
**DOUBLE GATE STRIKER**



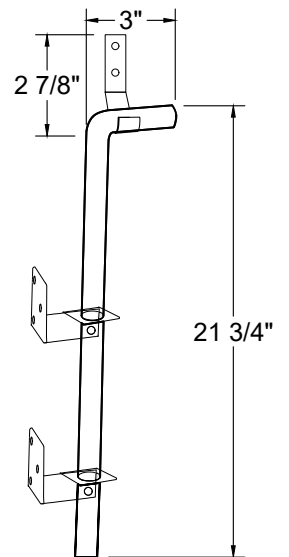
**GALVANIZED STEEL GATE POST STIFFENER**



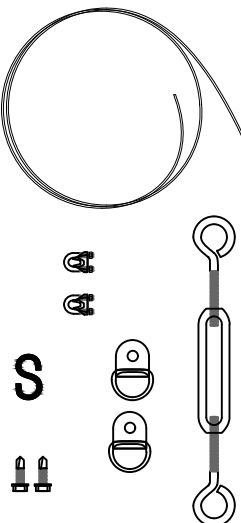
**ADJUSTABLE HINGE**



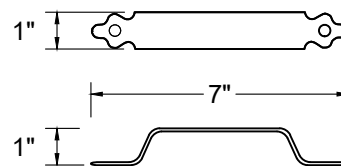
**DROP ROD ASSEMBLY**



**OPTIONAL:  
ANTI-SAG CABLE KIT**



**GATE HANDLE**



**NOTES:**

1. ALL TREX GATE HARDWARE IS BLACK POWDER COATED STAINLESS STEEL.
2. #14 SELF-DRILLING SCREWS ARE INCLUDED WITH HARDWARE.
3. INSTALLATION TO BE COMPLETED PER MANUFACTURER'S SPECIFICATION.
4. REFER TO [TrexFencingFDS.com](http://TrexFencingFDS.com) FOR CONSTRUCTION DETAILS AND PRODUCT INFORMATION
3. DRAWING NOT TO SCALE.

010923